



POLMIR
Augustów

Boat catalogue

"Romana 440"



Rowing and motor boat, fishing „Romana 440”

Technical data:

Length - 4,30 m

Width - 1,75 m

Weight of the empty unit - 150 kg

Number of people - 4

Engine power - 20 HP

Transom height - 400 mm (foot S)

Maximum capacity - 340 kg

Design category - C

Material of the hull - lps / GRP

Hull construction - DOUBLE COAT closed



POLMIR

Augustów

STABLE thanks to the wide bottom of the "V" type, which is easy to slide,

It has anti-slip surfaces on the seats and the floor.

Basic equipment included in the price of boat:

- 2 cleats PCV in the back of boat,
- 1 cleat INOX in the front,
- 1 locker in the back with a water drainage channel,
a closed flap on INOX hinges on the so-called "kandahar",
- 1 hollow on the front with drainage (for ropes or weights),
- 2 rowlock sockets INOX,
- through middle bench,
- 2 shelves at the middle bench for small things,
- mooring ear in the front INOX,
- transom protectors inner and external,
- fender rubber + ends INOX,
- water drain plug from the bottom of the boat,
- drain from the deck,
- drain from the engine bowl,
- deck color: white or grey,
- bottom color: white or green or anthracite,
(About other color of boat you can ask when doing an order)

Basic price
9 000 PLN net
11 070 PLN gross



All of the prices may change, please make sure it is up-to-date before placing your order.



boat "Romana 440"	
deck color:	grey RAL 7037
flaps and benches color:	white
bottom color:	white
9 000 PLN net	
11 070 PLN gross	



boat "Romana 440"	
deck color:	grey RAL 7035
flap and bench color:	white
bottom color:	anthracite RAL 7024
* 2x cleat INOX "rod" in the back	
9 200 PLN net	
11 316 PLN gross	



boat "Romana 440"	
deck color:	grey RAL 7035
bottom color:	green RAL 6002
* 2x cleat INOX "rod" in the back	
9 200 PLN net	
11 316 PLN gross	



boat "Romana 440"		net prices
		9 000 PLN
deck color:	grey RAL 7035	
bottom color:	anthracite RAL 7024	
<u>Equipment / *additional equipment:</u>		
- 1x cleat INOX in the front, 2x cleats PCV in the back		in price
* 2x railings (handles) INOX L25 in the back of the rowlock sockets		200 PLN
* windlass (roll) INOX forebody/big		400 PLN
boat "Romana 440"		net-->
with additional equipment		9 600 PLN
		gross-->
		11 808 PLN



* windlass (roll) INOX forebody/big

boat "Romana 440"			net prices
			9 000 PLN
deck color:	grey	RAL 7035	
bottom color:	green	RAL 6002	
<u>Equipment / *additional equipment:</u>			
- 3x cleats PCV			in price
* windlass (roll) INOX forebody/big with self-clamp and ear INOX			450 PLN
* weight 9 kg in a rubber cover			180 PLN
* 2x railings (handles) INOX L25 in the back of the rowlock sockets			200 PLN
* 2x fishing rod sockets PCV mounted on the railing			300 PLN
boat "Romana 440"			net--> 10 130 PLN
with additional equipment			gross--> 12 460 PLN



* windlass (roll) INOX forebody/big with self-clamp and ear INOX

* weight 9 kg in a rubber cover



* 2x fishing rod sockets PCV mounted on the railing

boat "Romana 440"			net prices
			9 000 PLN
deck color:	grey	RAL 7035	
bottom color:	green	RAL 6002	
<u>Equipment / *additional equipment:</u>			
- 3x cleat PCV			in price
* windlass (roll) INOX forebody/big with self-clamp and ear INOX			450 PLN
* weight 9 kg in a rubber cover			180 PLN
* 2x railings (handles) INOX L25 in the back of the rowlock sockets			200 PLN
* 2x fishing rod sockets PCV mounted on the railing			300 PLN
* swivel chair mounted on the middle bench			800 PLN
boat "Romana 440"			net--> 10 930 PLN
with additional equipment			gross--> 13 444 PLN



* 2x fishing rod sockets PCV mounted on the railing



* swivel chair mounted on the middle bench



* windlass (roll) INOX forebody/big with self-clamp and ear INOX

* weight 9 kg in a rubber cover

boat "Romana 440"		net prices
		9 000 PLN
deck color:	grey RAL 7035	
bottom color:	anthracite RAL 7024	
<u>Equipment / *additional equipment:</u>		
- 1x cleat INOX in the front, 2x cleats PCV in the back		in price
* 2x railings (handles) INOX L50 in the back		300 PLN
* 2x railings (handles) INOX L25 in the front		200 PLN
boat "Romana 440"		net-->
with additional equipment		gross-->
		9 500 PLN
		11 685 PLN



boat "Romana 440"			net prices
			9 000 PLN
deck color:	grey	RAL 7035	in price 500 PLN
bottom color:	anthracite	RAL 7024	
<u>Equipment / *additional equipment:</u>			
- 1x cleat INOX "rod" in the front			
* 2x railing INOX in the back (bent in the shape of a			
boat "Romana 440"		net-->	9 500 PLN
with additional equipment		gross-->	11 685 PLN



boat "Romana 440"				net prices
				9 000 PLN
deck color:	grey	RAL 7035	or	cream RAL 1015
bottom color:	green	RAL 6002	or	navy blue RAL 5011
<u>Equipment / *additional equipment:</u>				
- 1x cleat INOX "rod" in the front				in price
* 2x railing INOX in the back (bent in the shape of a				500 PLN
boat "Romana 440"			net-->	9 500 PLN
with additional equipment			gross-->	11 685 PLN



For cream and navy blue colors additional payment 200 PLN.

boat "Romana 440"		net prices
		9 000 PLN
deck color:	grey RAL 7035	
bottom color:	white	
<u>Equipment / *additional equipment:</u>		
- 1x cleat INOX "rod" in the front		in price
* 2x railing INOX in the back (bent in the shape of a letter L)		500 PLN
* windlass (roll) INOX forebody/big with self-clamp and ear INOX		450 PLN
boat "Romana 440"		net-->
with additional equipment		9 950 PLN
		gross ->
		12 239 PLN



* windlass (roll) INOX
forebody/big with self-clamp
and ear INOX



* 2x railing INOX in the back
(bent in the shape of a letter L)

boat "Romana 440"		net prices
		9 000 PLN
deck color:	grey RAL 7035	
bottom color:	anthracite RAL 7024	
<u>Equipment / *additional equipment:</u>		
- 1x cleat INOX "rod" in the front		in price
* windlass (roll) INOX forebody/big		400 PLN
* 2x railings (handles) INOX L25		200 PLN
* 2x railing INOX in the back (bent in the shape of a letter L)		500 PLN
boat "Romana 440"		net--> 10 100 PLN
with additional equipment		gross--> 12 423 PLN



* windlass (roll) INOX forebody/big



boat "Romana 440"		net prices
		9 000 PLN
deck color:	grey RAL 7035	
bottom color:	white	
<u>Equipment / *additional equipment:</u>		
- 1x cleat "rod" INOX in the front		in price
* locker in the front, under front seat		400 PLN
* 2x railing INOX in the back (bent in the shape of a letter L)		500 PLN
* 2x railings (handles) INOX L25 by the middle bench		200 PLN
* 2x railings (handles) INOX L25 at the front of the boat		200 PLN
* windlass (roll) INOX forebody/big		400 PLN
boat "Romana 440"		net--> 10 700 PLN
with additional equipment		gross -> 13 161 PLN

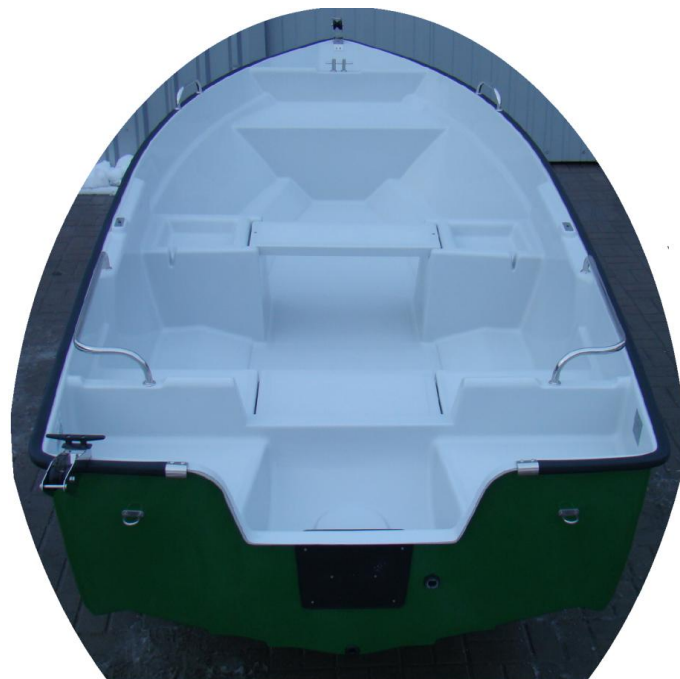


* locker in the front, under front seat

boat "Romana 440"		net prices
		9 000 PLN
deck color:	grey RAL 7035	
bottom color:	green RAL 6002	
<u>Equipment / *additional equipment:</u>		
- 1x cleat "rod" INOX in the front		in price
* 2x railing INOX in the back (bent in the shape of a letter L)		500 PLN
* 2x railings (handles) INOX L25 in the front of the boat		200 PLN
* windlass (roll) INOX forebody/big	in the front	400 PLN
* windlass (roll) INOX forebody/big with "cornual" cleat PCV	in the back	420 PLN
* 2x moor ear ø 8 in the back of the boat + reinforment		150 PLN
boat "Romana 440"		net--> 10 670 PLN
with additional equipment		gross -> 13 124 PLN



* windlass (roll) INOX
forebody/big with "cornual" cleat



boat "Romana 440"		net prices
		9 000 PLN
deck color:	grey RAL 7035	in price 1 000 PLN 200 PLN
bottom color:	white 10 000	
<u>Equipment / *additional equipment:</u>		
- 1x cleat "rod" INOX in the front		
* locker in the front, under front seat		
* 2x cleat INOX "rod" in the back		
boat "Romana 440"		net-->
with additional equipment		10 200 PLN
		gross ->
		12 546 PLN



* locker in the front,
under front seat



* 2x cleat INOX "rod"
in the back

		net prices	
boat "Romana 440"		9 000 PLN	
deck color:	grey RAL 7035	in price 200 PLN	
bottom color:	white		
<u>Equipment / *additional equipment:</u>			
- 1x cleat INOX "rod" in the front			
* 2x cleat INOX "rod" in the back			
* full set swivel chair	* floor reinforcement + montage + sealing	350 PLN	2 200 PLN
	* socket under the leg of the chair Fi 80	350 PLN	
	* leg + base with turntable for the chair	1 000 PLN	
	* swivel chair	500 PLN	
* socket for the leg of the chair Fi 80 + reinforcement + montage + sealing		700 PLN	
boat "Romana 440"		net-->	12 100 PLN
with additional equipment		gross ->	14 883 PLN



* socket under the leg of the chair Fi 80



* swivel chair

łódź "Romana 440"		net prices
		9 000 PLN
deck color:	grey RAL 7035	
bottom color:	green RAL 6002	
<u>Equipment / *additional equipment:</u>		
- 1x cleat INOX in the front, 2x cleats PCV in the back		in price
* 2x additional cleats PCV near to the middle bench		50 PLN
* windlass (roll) INOX forebody/big		400 PLN
* locker in the front, under front seat		1 000 PLN
* channel to put wires from engine to the back locker + protecting rubber		200 PLN
* 2x moor ear ø 8 in the back of the boat + reinforcement		150 PLN
boat "Romana 440"		net--> 10 800 PLN
with additional equipment		gross -> 13 284 PLN



* channel to put wires from engine to the back locker + protecting

boat "Romana 440"			net prices
			9 000 PLN
deck color:	grey	RAL 7035	in price 500 PLN 300 PLN 450 PLN
bottom color:	green	RAL 6002	
<u>Equipment / *additional equipment:</u>			
- 1x cleat INOX "rod" in the front			
* 2x railing INOX in the back (bent in the shape of a letter L)			
* 2x railings (handles) INOX L50			
* windlass (roll) INOX forebody/big with self-clamp and ear INOX			
* full set swivel chair	* floor reinforcement + montage + sealing	350 PLN	2 200 PLN
	* socket under the leg of the chair Fi 80	350 PLN	
	* leg + base with turntable for the chair	1 000 PLN	
	* swivel chair	500 PLN	
* socket for the leg of the chair Fi 80 + reinforcement + montage + sealing			700 PLN
boat "Romana 440"		net-->	13 150 PLN
with additional equipment		gross ->	16 175 PLN



* windlass (roll) INOX forebody/big with self-clamp and ear INOX



Complete swivel chair



2x sockets for the foot of the chair

boat "Romana 440"		net prices
		9 000 PLN
deck color: grey RAL 7035		
banch and flap color: white		
bottom color: anthracite RAL 7024		
<u>Equipment / *additional equipment:</u>		
- 1x cleat INOX "rod" in the front		in price
* 2x railing INOX in the back (bent in the shape of a letter L)		500 PLN
* windlass (roll) INOX forebody/big		400 PLN
* locker in the front, under front seat		1 000 PLN
boat "Romana 440"		net--> 10 900 PLN
with additional equipment		gross -> 13 407 PLN



* windlass (roll) INOX forebody/big



* locker in the front, under front seat



boat "Romana 440"		net prices
		9 000 PLN
deck color:	grey RAL 7035	
bottom color:	anthracite RAL 7024	
<u>Equipment / *additional equipment:</u>		
- 1x cleat INOX "rod" in the front		in price
* 2x cleat INOX "rod" in the back		200 PLN
* 2x railings (handles) INOX L25		200 PLN
* locker in the front, under front seat		1 000 PLN
* locker in the left side near the middle bench		1 000 PLN
boat "Romana 440"		net--> 11 400 PLN
with additional equipment		gross -> 14 022 PLN



* locker in the left side near the middle bench

* locker in the front, under front seat



boat "Romana 440"			net prices
			9 000 PLN
deck color:	cream	RAL 1015	
bottom color:	navy blue	RAL 5011	
additional payment for cream and navy blue colors			200 PLN
<u>Equipment / *additional equipment:</u>			
- 1x cleat INOX "rod" in the front			in price
* 2x railings (handles) INOX L80			400 PLN
* 2x railing INOX in the back (bent in the shape of a letter L)			500 PLN
boat "Romana 440"		net-->	10 100 PLN
with additional equipment		gross ->	12 423 PLN

